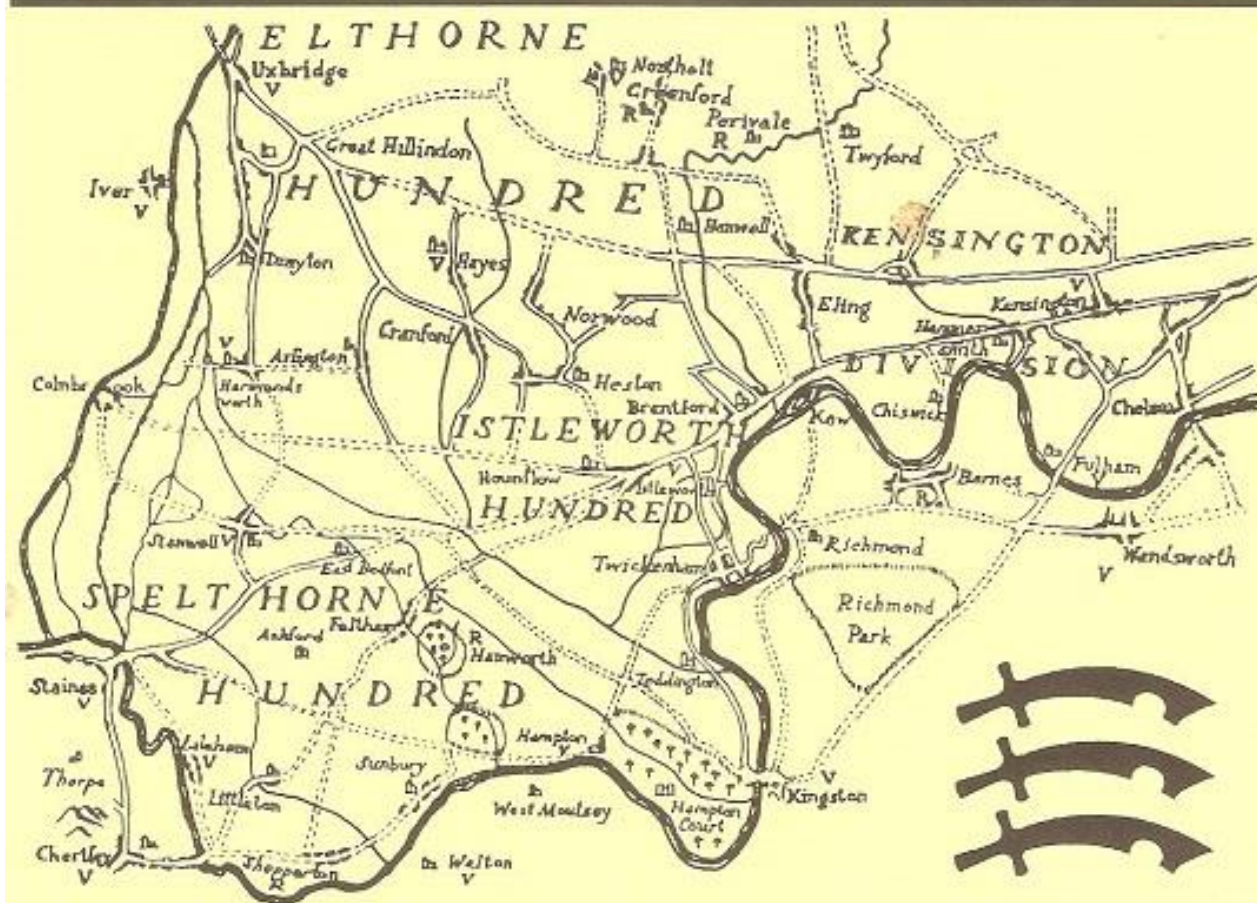


West Middlesex Family History Society Journal

ISSN 0142-517X

Vol. 16 No. 1

March 1998



WEST MIDDLESEX FAMILY HISTORY SOCIETY

Executive Committee

Chairman	Leslie Munson 41 Trotsworth Avenue, Virginia Water, Surrey GU25 4AN	
Secretary	Mrs Mavis Burton 10 West Way, Heston, Middlesex TW5 0JF	
Treasurer	Ms Muriel Sprott 1 Camellia Place, Whitton, Twickenham Middlesex TW2 7HZ	
Membership Secretary	Peter Roe 171 Fernside Avenue, Feltham Middlesex TW13 7BQ	
Editor	Mrs Yvonne Masson 65 St Margaret's Grove, East Twickenham Middlesex TW1 1JF	
Publicity Officer	Ted Dunstall 43 Elers Road, Ealing, London W13 9QB	
Programme Secretary	Mrs Janet Hagger 9 Mandeville Road, Shepperton, Middlesex, TW17 0AL	
Committee Members	Jim Devine David Neller Joan Scrivener	Chris Hern Maureen Harris
Society Web site	http://home.clara.net/dchilds/wmfhs/	
Subscriptions	Individual Membership Overseas Membership Family Membership Corporate Membership	£8.00 per annum £9.00 per annum £10.50 per annum £8.00 per annum
Subscription year	1 October to 30 September	
Hon. Auditors	Paul Kershaw and Wendy Mott	

In all correspondence please mark your envelope WMFHS in the upper left-hand corner; if a reply is needed, a SAE/IRCs must be enclosed. Members are asked to note that receipts are only sent by request, if return postage is included.

Published by West Middlesex Family History Society
Registered Charity No. 291906

WEST MIDDLESEX FAMILY HISTORY SOCIETY JOURNAL

Volume 16 Number 1

March 1998

Contents

Editor's Notes	2
Future Meetings	3
Annual General Meeting	3
News Roundup	9
Certificate Courier Service	12
An Insurance Document Starts a History Trail	13
From The Times 14 February 1835	15
Previous Meeting	16
Help!	17
Society Publications on Microfiche	19
A History of the Wild and Weekly Families in Harmondsworth 1600-1950, Part II	21
Bookshelf	30
The value of a Post Office Savings Bank Book	32
Network Tape Library	33
New Members	34
Surname Interests	35
Indexes Held by Members	40

© West Middlesex Family History Society and contributors 1998.

No part of this publication may be reproduced in any form or by any means without permission. Articles in this journal do not necessarily reflect the opinions of the Editor and the Executive Committee. The Society cannot vouch for the accuracy of offers of services or goods that may appear.

All articles and other items for the Journal should be sent to:

Mrs Yvonne Masson
65 St Margaret's Grove, East Twickenham, Middlesex TW1 1JF

Exchange journals from other societies should be sent to:

Mrs Mavis Sibley
13 Blossom Way, West Drayton, Middlesex UB7 9HF

Queries concerning non-delivery or faulty copies of this Journal should be sent to:

Peter Roe
171 Fernside Avenue, Feltham, Middlesex TW13 7BQ

Members of the Society who have attended recent monthly meetings will be aware of the change in Editorship of the Journal and the people involved, but those unable to come to meetings and members who live elsewhere in the country and overseas may be somewhat in the dark. So I should like hereby to clarify the situation a little.

Richard Chapman, who has been your editor for the past six years, and who it is generally felt raised the standard of the Journal to its present high level, has stood down for a well-earned rest and a chance to spend more time actually researching his own family history.

I have been a member of the Society for some years and will be taking over responsibility for the editorial side of the Journal, while Joan Scrivener, another long-serving Society and Committee member, will deal with presentation, layout, and seeing the Journal through to production. Between us we hope to maintain the high standard set by Richard.

I should like the Journal to serve in part as a Forum for your views on the world of family history in general: why and how we do it, how it is organised both in this country and worldwide, and perhaps how it could be improved. If you have views I will do my best to give them an airing — your ideas could help other family historians in the future. So anything from a short letter to a fully-fledged article will be welcome. Don't forget that under the exchange journal system, our Journal is seen by the members of a number of other family history societies, besides falling onto the desks of some of the powers-that-be in family history, so if you have ever felt something needed saying or changing, now's your chance to tell the world about it!

Journal Deadline

Contributions for the June issue should reach the Editor by 3 April.

We are sure readers will be indebted to member Pam Morgan for drawing our attention to the following bargain: The Probate Registry, Duncombe Place, York YO1 2EA, Tel/Fax: York (01904) 624210 DX61543 York, will carry out a three-year search from stated date of death for any post-1857 will/letters of administration in England and Wales upon a postal application. If a search is successful, the request is passed to the issuing Registry.

Fee of only £2 per will which also covers UK or overseas airmail postage; longer searches can be conducted on request, charged at £2 per three-year period; crossed cheques or postal orders made payable to HM. Paymaster General, or international money orders, cheques or drafts (sterling) payable through a UK bank.

FUTURE MEETINGS

The following meetings have been planned:

- | | |
|---------------|---|
| 19 March 1998 | <i>Death Duties and Other Taxes</i>
Joyce Hoad |
| 16 April | <i>Very Useless and Not Too Correct in their Morals:
Crimean War Camp Followers</i>
Brian Oldham |
| 21 May | <i>Members' Index Evening?</i> (to be finalised) |
| 18 June | <i>Feltham</i>
Peter Watson |
| 16 July | <i>Hospital Records</i>
Janet Foster |
| 20 August | <i>Members' Evening</i> |
| 16 September | <i>Letter Boxes</i>
John Smith |

The meetings are held on the third Thursday of each month at Montague Hall Montague Road, Hounslow, and start at 7.30 pm.

ANNUAL GENERAL MEETING

The following are the minutes of the Annual General Meeting of the West Middlesex Family History Society, held at Montague Hall, Montague Road, Hounslow on 18 December 1997.

1. Apologies for Absence

Apologies had been received from Vic and Jean Gale and Maureen Harris.

2. Approval of the Minutes of the AGM of 19 December 1996

The Minutes of the Annual General Meeting of 19 December 1996 were approved and signed by the Chairman. There were no matters arising.

3. Treasurer's Report and Approval of Audited Accounts

The Treasurer, Muriel Sprott, made the following report on the progress of the Society during 1997:

As usual, I begin by saying a big thank you to everyone who has supported the Society this year, especially those who have carried on despite personal ill-health and family difficulties.

Our Open Day was wonderful. Peter Roe did a great job, and I am sure was very relieved when all the volunteers he'd been hoping for appeared on the day. Les and Jill Munson as always kept their heads down and worked solidly all day. Thank you all.

Thanks are also due to our auditors, Wendy Mott and Roger Minot. This is Roger's last year as auditor, having performed this necessary but unsung task for the past eight years.

I am a little concerned that some members with Deeds of Covenant aren't sure whether they have deeds or not. As you have to make an entry on your tax return, can I please ask you to make a note in your personal tax file?

The accounts are circulating, so let me add some explanations, beginning with the fixed assets. During the year we've purchased the 1891 census of Middlesex, which a team of volunteers are now indexing. The more volunteers, the quicker the task will be completed and the sooner we can sell the indexes and recoup some of our costs.

We have scrapped our two microfilm readers which were sitting in lofts and gathering dust, the accounting software which is no longer used and a computer which finally gave up the ghost. The depreciation charged in last year's account for the Harmondsworth Court Rolls has been written back. The Rolls themselves are now at the London Metropolitan Archives.

We can, and do, measure precisely the value of funds which flow into and out of the Society, but how we display these figures can be a matter of interpretation. For example, attendance at other societies' Open Days, and holding our own Open Day, incur expenses. Our main source of revenue at these events comes from bookstall sales. To accurately calculate the bookstall profit from Open Days and then charge it to a different part of the I & E involves a lot of extra work for a small number of people. This extra work was making some of us a bit tetchy, which is not good for us or this Society. We discussed this and agreed that visiting Open Days is a PR exercise and any income generated is a bonus. We have therefore decided that all bookstall sales, wherever they take place, will be credited to the bookstall. I am aware that this approach may dismay some people, but hope that now the reasons are explained, you will understand and accept our decision.

Hall hire costs appear to have reduced. This is because the invoice from the Hounslow Council covering the period July to September only arrived after the accounts had gone to audit.

Sales of the Members' Interests booklet show a loss. Some copies are held by the Membership Secretary who issues them, free of charge, to new members in lieu of the fiche copies, which have now run out.

With the good news, once again, that our financial state is very healthy, I'd like to thank you for your attention. If you have any questions I'll be only too pleased to try and answer them.

4. Appointment of Auditors

Paul Kershaw agreed to act as Auditor in place of Roger Minot, who was standing down. Wendy Mott will continue to serve. The meeting approved their appointment nemcon.

5. Chairman's Report

I reported at the last AGM that the Society had experienced a markedly uneventful year. The same can be said about the past year.

I shall not this time list the various open days, shows and fairs etc. at which the Society was represented, or ran a stall, since the Secretary has mentioned each of them as they occurred in her regular informative articles for the Journal. With her retirement a hole will be left in the Journal. I hope the new Secretary can fill the gap and keep members informed about the Society's wider activities.

Equally true this year, as it was for last year, is that we still cannot attract sufficient volunteers to undertake work on our various ongoing and unfinished projects. The Society is therefore almost at a standstill in this respect. A pleasing exception is the indexing of the 1891 census for West Middlesex, where we have been fortunate in having Lewis Orton to co-ordinate the work, and an enthusiastic team of transcribers who are working to finish with an Index for the benefit of all members. One has only to look at the use made of the 1881 Index to visualise how valuable this will be. Further transcribers would be very welcome, thus speeding the appearance of the Index.

On behalf of all who attend our regular monthly meetings I wish to record our appreciation of those members who week after week, month after month carry in books, reference materials etc., and then spend the evening giving attention to us from behind their tables. If I list their names, I could offend if I left one out, but I would like to make one exception by thanking someone who with her husband helps to make our meetings into social occasions. I refer of course to Jennette Hocking, who provides us with very welcome refreshments and at the same time even makes a small profit to contribute to the Society.

Lastly I must thank your Executive Committee members for the jobs they each do for you to ensure the smooth running of the Society, and for the support they have given me during the year. Since they are retiring today, I must mention our Editor, Richard Chapman, who has kept our Journal amongst the best published by Societies, and Yvonne Woodbridge, our retiring Secretary, who has shouldered for six years more of the Society's workload than is normally expected from a Secretary.

Thank you for coming to the AGM. May you all have a very happy Christmas.

At the end of the Chairman's Report a vote of thanks was offered by Peter Roe, the Membership Secretary, to the retiring Editor of the Journal, Richard Chapman, who was presented with a gift.

Les Munson and Valerie Walker each gave a vote of thanks to Yvonne Woodbridge, the retiring Secretary, and she was presented with a bouquet.

6. Election of Officers and Members of the Committee

Richard Chapman, Antonia Davis and Yvonne Woodbridge, having served six years on the Committee are standing down.

Jim Devine, Janet Hagger, Les Munson, David Neller, Peter Roe, Joan Scrivener and Muriel Sprott, having served three years or more on the Committee, offered themselves for re-election. Nominations were made for vacant posts as follows:

Maureen Harris	Prop. Yvonne Woodbridge	Sec. Jill Munson
Yvonne Masson	Prop. Richard Chapman	Sec. Juliana Powney
Ted Dunstall	Prop. Antonia Davis	Sec. Diana Bradley

The elections were carried out en bloc and the appointment of all the candidates was approved by the meeting.

7. Any Other Business

Peter Roe expressed concern over the fact that attendance at Society monthly meetings had markedly gone down over the past few months. This led to a general discussion as to the possible cause. It was pointed out that the response from members to the questionnaire asking for suggestions for lecture topics or other uses for the monthly meetings had been poor - only about thirty replies had been returned. The helpfulness or otherwise of lectures and members evenings was discussed. Question and answer sessions were also suggested. The Committee would consider these suggestions at a subsequent meeting.

There being no further business, the meeting was closed.



After the business of the AGM was over, Toni Davies gave a short illustrated talk on the water supply in West London, especially in Acton and Uxbridge, in the eighteenth and nineteenth centuries, and how its availability or otherwise at various times may have affected people's lives. She also spoke of the rise and decline of local spas as centres for health and entertainment.

WEST MIDDLESEX FAMILY HISTORY SOCIETY
YEAR TO 30 SEPTEMBER 1997
RECEIPTS AND PAYMENTS ACCOUNT

	1997		1996
MEMBERS' SERVICES			
Subscriptions	5088		5118
Bank interest	375		322
Tax refund on covenants	276		297
Advertisements in journal	-		32
Sale of back journals	33		25
	<u>5772</u>		<u>5794</u>
Journal production & delivery	3348	2981	
Hire of meeting hall	393	681	
Speakers	238	152	
Members' interests fiche	-	194	
	<u>3979</u>		<u>4008</u>
	1793		1786
Bookstall sales(incl.W.Middx pub'ns)	2179	748	
Less: cost of sales	<u>1172</u>	<u>627</u>	
	1007		121
Fiche & census books sold	656	809	
Less: cost of sales	<u>458</u>	<u>379</u>	
	198		430
Sale of journal index	-	43	
Less: cost of sales	=	23	
	-		20
Postal book service	386	337	
Less: cost of sales	<u>326</u>	<u>284</u>	
	60		53
Members' interests booklet	12	143	
Less: cost of sales	<u>40</u>	<u>105</u>	
	(28)		38
WMFHS / Other open day income	405	586	
Less: Associated costs	<u>309</u>	<u>500</u>	
	96		86
OTHER INCOME			
Donations includ. tax refund	10		349
Courier service	302		283
Refreshments	50		45
Raffles	226		224
West Middx marriage index searches	105		134
1881 Census index searches	214		143
Other income	20		29
	<u>4053</u>		<u>3741</u>
OVERHEAD EXPENSES			
FFHS Subscription & insurance	333	292	
Membership of other societies	13	12	
Research expenditure	189	25	
Postage, stationery & telephone	242	340	
Library purchases	28	100	
Misc. expenses incl. publicity	446	254	
Depreciation	<u>538</u>	<u>536</u>	
	1789		1559
Surplus for year	<u>£2264</u>		<u>£2182</u>

BALANCE SHEET AT 30 SEPTEMBER 1997

	Cost or Value at 30.9.94	Dep'n	Value at 30.9.97	Value at 30.9.96
FIXED ASSETS				
1881 Census index	1087	519	568	606
1891 Census	752	188	564	-
Film & fiche viewers	234	154	80	106
Kodak slide projector	315	109	206	229
Projector stand	1	-	1	1
1988 IGI fiche	75	51	24	32
Times divorce index	11	7	4	5
Boxes & display shelves	31	21	10	13
Computer & software	1009	690	319	426
Accounting software	-	-	-	1
Virus checking software	89	31	58	65
Heavy duty printer	95	55	40	54
Banner for Open days	65	18	47	52
Harmondsworth Manor Rolls	348	-	348	314
	4112	1843	2269	1904
CURRENT ASSETS				
Stocks: Bookstall		1796		1123
Members' Int. Booklet		113		153
Fiche	2207	243		46
Postal Book Service		55		39
Polylopes		43		22
Debtor - Bookstall		117		-
Cash at Bank & in hand		10500		9806
			12867	11189
CURRENT LIABILITIES				
Subscriptions in advance		1904		2166
Creditor - Bookstall		21		-
Deposits held		38		18
			1963	2184
			£13173	£10909
ACCUMULATED FUND				
Balance brought forward			10909	8727
Surplus for the year			2264	2182
			£13173	£10909

We have compared the Receipts & Payments Account and the Balance Sheet with the books and vouchers of the Society and confirm that they are in accordance therewith.

R. Minot
Hon. Auditor

W. Mott
Hon. Auditor

M. Spratt
Hon. Treasurer

NEWS ROUNDUP

Bedfordshire FHS

This society are holding a one-day conference and research day on the subject of "People" on Saturday 4 July 1998, 9.30 am to 5 pm, at the Mark Rutherford Upper School, Bedford, entrance fee £15 to include lunch, tea and coffee. Apply to Kath Gerrard, 34 Jubilee Street, Luton, Beds. LU2 0EA by 1 June 1998.

Buckingham FHS

The Buckinghamshire FHS Open Day 1998 will be held on 25th July. Apply to the Society for further details.

Dorset FHS

The Dorset FHS Open Day 1998 will be held at Oakmead College of Technology, Duck Lane, West Howe, Bournemouth, on 21 March, 10am to 4pm.

Society of Genealogists Family History Fair 1998

This event will take place at the Royal Horticultural Society New Hall, Westminster, on 2 and 3 May, 10am to 5pm each day. Tickets in advance from SOG, £4, on the door £6.

Victoria County History of ESSEX will be holding a residential weekend at the Wivenhoe House Hotel, Wivenhoe Park, Colchester, Friday to Sunday 12-14 June 1998, to celebrate the 350th Anniversary of the Siege of Colchester during the Civil War- It will include talks on various aspects of Colchester's history, a guided walk and a visit to Colchester History Fair. Fee £160 per person, deposit £45, will include meals, lectures and accommodation. Non-residential option available. Bookings and details from Prompt Corner, 20 Park Drive, Romford, Essex RM1 4LH.

West London Local History Conference

The 1998 Conference on the theme Liquid History: The History of the Thames in West London will be held on 21 March at Montague Hall, Montague Road, Hounslow. Topics include Foreshore archaeology, Making a living from the river, and leisure. Tickets £7.50 from: Miss R. Ensing, 103 Engadine Street, London SW18 5DU.

Yorkshire Family History Fair

This event will be held at York Racecourse (Knavesmire Stand) on Saturday 27 June 1998 from 10am to 4.30pm with stalls, cafeteria and free parking. Admission £1.50. Further details from *Mr A. Sampson, 10 Oxgang Close, Redcar, Cleveland T810 4ND. Tel. 01642 486615.*

Institute of Heraldic and Genealogical Studies

Day and Residential Courses for 1998 include:

House History, 13-15 March (Weekend Course), fee: £140 (closing date 20 February);

The Professional Approach (Day Seminar), 9 May, fee: £38.50 (IHGS Members and Students £35) (closing date 24 April);

Wills and Probate (Day School), 20 June, fee: £32 (£29) (closing date 5 June);

Beginners Residential Course, 20-24 July, fee £220.

The address of the Institute is: 79-82 Northgate, Canterbury, Kent CT1 1BA, tel: 01227-768664, fax: 01227-765617.

The Twelfth Family History in Wales Course

This will be held from Saturday 15 August to Saturday 22 August 1998 at the University of Wales, Aberystwyth. This residential course is accredited by the University; however, participants are welcome to attend either to gain academic credits or for personal satisfaction. Full and varied programme with well-known speakers, plus field-trips and social activities. Early booking advisable. Special consideration given to overseas participants. Brochure from: *The Course Director (FHW98), The Department of Continuing Education, University of Wales, 10-11 Laura Place, Aberystwyth SY23 2AU.*

The London Branch of the Welsh Family History Societies has the following programme in 1998 for those with Welsh roots, to be held at Society of Genealogists, 14 Charterhouse Buildings, Goswell Road, London:

Saturday 14 February, 2pm: AGM followed by *An Illustrated History of Coal Mining in South Wales*, Dr Bill Jones;

Saturday 9 May, 2pm: *Records of the Genealogical Society of Utah*, Keith Withington;

Saturday 3 October, 2pm: *Beti Ifan's Diary involving family documents, c.1765 to 1865*, Dafydd Hayes;

Saturday 12 December 1998, 2pm: *Crime in 17/18th Century Wales*, Gerald Morgan.

A donation of £2 per meeting would be appreciated to cover costs.

The Federation of Family History Societies informs us that the Wills Search Room at Somerset House will be moving to "High Holborn" (no more details yet), probably in June 1998. The Probate indexes will eventually become available on microfiche at the Family Records Centre.

News from the PRO

Recent releases or additions to the microfilms available in the Microfilm Reading Room are:

Non-conformist registers (RG4) [Duplicates at Family Records Centre]
Records of Dr Williams' Library and Wesleyan Metropolitan Registry (RG5)
Registers of Seamen's Wills 1786 to 1909 (ADM142)

In addition the Microfilm Reading Room will shortly take possession of complete sets of:

Records of Army Officers' Service, 1764 to 1954 (WO76) Naval Medal Rolls 1793 to 1972 (ADM71)

The "Burnt Collection" of World War I records, damaged by enemy action during World War II, is gradually being microfilmed and as each letter of the alphabet is completed, these are being made available in the Microfilm Reading Room. Q, U, V and Z should have been available by the end of 1997, and O and N by the end of March 1998. Further information can be obtained from Alison Webster, 0181 392 5239.

The first Open Day at PRO Kew will take place on Saturday 19 September 1998 as part of the London Wide Open Weekend scheme. Visitors will be able to go all over the PRO including places not normally open to the public. Tours and other activities will be organised for the day.

PRO Site Tours: from January 1998, tours of the PRO Kew, which last about an hour and are free, will take place on the second Friday of each month at 12.30pm.

London Metropolitan Archives: At Home

LMA is to hold another "At Home" session for groups from local family history societies. Guests will be introduced to the workings of the office and to some of the sources held. We have nominated Tuesday 17 March 1998, 2.30-4.00pm for attendance by members of West Middlesex FHS. If you would like to attend, contact Janet Hagger (address inside front cover) as soon as possible, since the number of places is limited. The LMA is located at *40 Northampton Road, London EC1R 0HB*, and is not far from the Family Records Centre.

Viewology, the interactive tombstone, has been launched by American company Leif Technologies, whose motto is "Memorials that tell a story". The durable weatherproof LCD screen is designed to be built into a headstone, and is capable of displaying 20 pages of text and photographs to provide a "visual eulogy" - until the built-in battery runs out. Solar power is an option, as is a data port so visiting mourners can download the personal details into their laptops (*see www.leif.com*).

From the Daily Telegraph 11 November 1997.

Certificate Courier Service

You will see from the Accounts that the Courier Service raised £302 for the Society, so please keep your requests coming in. As the cost of certificates purchased direct from the Family Records Centre is going up by 50p on 1st April 1998 for the benefit of new members I thought I would outline some of the details:

Charges

£8.00 per certificate if the reference is supplied. Please quote all the details given in the index (i.e. name, year, quarter, district volume and page). If you have obtained these details from the microfiche, please ensure you provide me with the *correct* quarter. I do check all references, but don't expect to check several quarters!

£9.00 per certificate includes a three-year search of the indexes (i.e. 12 volumes). All background information available would be appreciated. Refund of £6.50 if the three-year search is unsuccessful.

If you wish a "check" to be made, please tell me. For example, if you think you have the right child but do know the father's name, I can put a check on the back of the form with the father's name- If this is not correct, there is a £3 refund but NO certificate.

Timing

My visits to Myddleton Place depend on the number of requests I receive, but I do try to go at least every ten days. There is then a delay of four working days for the certificates to be mailed to me and I try to send them out straight away but will tend to wait until I have confirmation of a refund, if relevant, before writing. I apologise, in advance, for any delay which might occur due to family commitments.

Unwanted Certificates and copies of others have been gratefully received from members and these together with copies of all certificates I have obtained for members are now on the database - nearly 1000!

Thank you for your support of the Society and I look forward to hearing from you.

When applying, please quote your membership number and make your cheque payable to me (NOT WMFI-IS). All payments must be in Sterling. SAEs appreciated.

Valerie J. Walker (Miss), 32 Cunnington Street, Chiswick, London W4 5EN

AN INSURANCE DOCUMENT STARTS A HISTORY TRAIL

E. June Lines

Research into my mother's family - the Atkins - started when I discovered an arbitration award to settle the distribution of her father's life assurance, contested within the family after his death in 1937. It gave the full names of her four surviving brothers and sisters, and how much each had received - a pittance in today's money, but valuable then. A copy of her father's (William Thomas Atkins') birth certificate was in the same box. His father was George Atkins, a carman, his mother formerly Sarah Darvell; they were living at 2 Rose Cottages, Askew Road, Shepherds Bush in 1876.

For all I knew, grandfather was an only child, so I started searching at St Catherine's House for marriages in 1876 and earlier, and parental births to fit. I found that the marriage took place in 1866 at Amersham Lower Baptist Chapel, Buckinghamshire. George was a 21-year-old coal merchant, father Jonathan (deceased); Sarah was 25, and her father was Thomas Darvell, a bricklayer of Chesham.

George's birth certificate was quickly traced - 1844, Great Missenden, mother formerly Sarah Gomm. Sarah Darvell was a common name in Bucks, and her birth took longer to find; she was a month off 27 when she married, not 25 as she claimed. Her mother was Eleanor East. The index to the 1881 census showed both her parents living at Waterside, Chesham, with their youngest surviving children, Mary Ann and Frederick. Earlier censuses gave me all the children's names, as well as those of Thomas's brothers and sisters.

George and Sarah left for the bright lights after their marriage and settled in Hammersmith; they had six children by 1881, and grandfather was known as Willie. George was working for the Yorkshire Bakery (location not traced so far).

George ATKINS = Sarah DARVELL
1844–after 1919 | 1839–1919

- Frederick George 1868–1944
m. 1889 Mary Jane CAVELL (1870–1930) Hammersmith St. John
- Sarah Ann 1871–?
- Elizabeth Ellen 1873–?
m. 1895 Arthur DARVELL (cousin), Hammersmith St. Luke
- William Thomas 1876–1937
m. 1896 Alice LOCK (1877–1916) Hammersmith St. Peter
- Alfred J. – 1878–?
- Emily Frances 1881–1978
m. 1910 George Harry Masser, Chorleywood

Two later children are still being sought: Mary, who is said to have married George Brown, a policeman, and Arthur.

Once the older children were off their hands, George and Sarah returned to the country - Chorleywood, not far from Chesham. Thomas Darvell had retired there and Sarah's eldest brother, another George, lived nearby.

I followed up every lead, searching for Darvells, Easts and Gomms in Buckinghamshire, Locks in the Brentford-Sunbury area and Cavells in Hammersmith. I advertised in the *Genealogical Research Directory*, and a year later had an enquiry from a New Zealand researcher whose great great grandparents were - Thomas and Eleanor Darvell! His great grandfather was their son Frederick. I sent him all the records I had and was rewarded when he later received a family tree drafted many years earlier by a Darvell's husband, and sent me a copy. Through the Buckinghamshire Genealogical Society, a researcher from a different Darvell family has made contact, and we spend time checking and cross-checking. We continue to revise and add to the original draft, and I have become familiar with parish records, non-conformist records, wills and admons, and local newspaper reports.

By a great coincidence, I have been put in touch with an unknown Atkins cousin who has told me of yet another family group. Brought up in Hammersmith, she moved to Suffolk where she worked as a post office counter clerk. She asked a Mrs Darvell who came in to collect a pension whether she was connected with the Chorleywood Darvells. "No, but my husband was." They've been in touch ever since. I wrote speculative letters to several Darvells, including this Suffolk lady, and have since been supplied with reminiscences and photos.

Frederick George had five children, and his eldest son, Frederick Thomas George Atkins (1896-1963) was for many years caretaker of St Paul's School at Hammersmith Broadway, since demolished to make room for the flyover. Before that he worked for Hammersmith Borough Council as a carman, as had his brother Walter, but left when they stopped using horses. Of his children, one died in the RAF in 1944 and four emigrated to Canada. The local newspaper report of his funeral listed the mourners and senders of floral tributes, providing a useful supply of new names to follow up.

The Locks are proving harder to winnow out. I found grandmother Alice Lock's birth at Brentford in 1877. Her father Thomas was a lighterman living in Bailey's Row off Back Lane; the area is now contained between High Street and Walnut Tree Road, and Hounslow Library kindly supplied a contemporary map. Her mother was Elizabeth, formerly Blackhall. If the facts presented in the 1881 census are correct, Elizabeth bore a child at age 16:

Thomas Lock, head, 31, coal porter, born Ealing
Elizabeth, wife, 23, born Ireland

Elizabeth, dau., 7, scholar, born Ealing
Alice, dau., 3, born Ealing
John C., 1 month, born Ealing

I'm combing the IGI for Ireland in the hope of finding her birth. No marriage has so far come to light.

Other Lock seekers in the West Middlesex F.H.S. put me on Thomas's track. He was born at Brentford on 14 December 1850, the son of John Lock, a gardener born in Sunbury 1821/2, and his wife Elizabeth Prior, born 1822/3. They married at St George's Chapel in 1846 and had six children.

It's clear there's much more searching to do. I am inclined to agree with an Australian researcher who wrote to me, over stamping her letters with the message:

"I think that I shall never see
A finished genealogy"

From *THE TIMES* 14 February 1835

CAUTION - Whereas certain persons are in the habit of meeting and disgracing His Majesty's and Mr De Burgh's Hunt under the assumed character of gentlemen, to the great annoyance of all real sportsmen and injury of the Landholders' crops and fences:-TAKE NOTICE, that if any of the above description of PERSONS are FOUND TRESPASSING on any of the lands or premises in the occupation of any of the undersigned, in the several parishes of Hayes, Southall, Heston, Isleworth, Twickenham, Hanworth, Feltham, Bedfont, Harmondsworth, Harlington, Cranford, Northolt, West End, Greenford, Hanwell and Ealing, in the county of Middlesex, after this public notice, he or they will be PROSECUTED as wilful trespassers. And whereas on Friday, January 2nd 1835, several of the above class, instead of riding on the road after the hunt, were wantonly trespassing upon the lands in the neighbourhood of Southall and breaking clown the fences, and on being remonstrated with, an individual in a dark coloured coat, on a black horse, rode up and struck the person so remonstrating, with the hammer end of his hunting whip, and broke his arm, in consequence of which he fell from his horse, and the assailant then rode away.

Christopher Baxter	Francis Sherbourne	Robert Trumper
S. Farlan	John Davis	Thomas Walton
Dan Wilshin	Matthew Newman	Edmund Fairbrother
Josiah Hunt	Joseph Newman	Wm. Humphries
Charles Newman	William Jupp	Henry Brumbridge
Robert Symonds	Joseph Jessop	James Ede
Charles Eley	Isaac Cane	John Collins

William Guerrier
Henry Jupp
Robert Thackrah
Thomas Chandler
George Wilshin
William Hatch
Henry Davis
James Tyllier
Matthew Stent
John Peto
Henry Knevet

W.D. Buckland
William Parrott
George Trumper
William Welch
Samuel Roberts
A.H. Johnson
Henry Phelps
James Norris
George Ellis
Robert Hankins
William Atley

George Sherbourne
C.H. Stanborough
John Wilmot
John Chapman
Thomas Beach
James Lawrence
John Gurney
Daniel Gurney
John Gurney
Jason Gurney
Joseph Hutchins

Submitted by Annie Weare

PREVIOUS MEETING

On 15 January Simon Fowler came to talk to us about Sources at the Public Record Office. The PRO is the National Archive of England and Wales — Scottish Records are held at Edinburgh and Irish records at Dublin. The PRO was set up in 1868 to hold records created or acquired by Central Government and the Law Courts - there are records going back 900 years. Not all records are kept - every year a team selects those to be preserved but tax records, pension claims, social services records, for instance, are destroyed; in fact about 99% of the total records are thrown away; even so, a mile of new archive material is acquired each year. The records are subject to closure periods, usually 30 years, although the census records are closed for 100 years, and those of World War One for 75 years. Altogether the PRO stores 97 miles of records, perhaps 20 million items. There are one-and-a-half million photographs, six million maps. There are also small collections of objects, such as guns and Victorian ephemera.

The original building at Chancery Lane is now empty and up for sale (it may be used in the future to house the Victoria and Albert Museum National Art Collection). It was very expensive to run, and not suitable for up-to-date record keeping of the modern era. The new building at Kew is cabled for the latest electronic systems. The public facilities are also better, and there is storage space which should last till about 2010. After that, the records will probably be kept in electronic form. The opening hours have been extended, with Saturday opening and late nights twice a week. The library contains some very useful sources: a large collection of directories, a complete run of the Gentleman's Magazine, plus 150,000 books on British history - somewhere to browse even when not doing family history research. About 60% of the people who use the facilities at Kew are family historians, but there are also academics, local historians, students, professional researchers.

A programme is under way to microfilm the World War One records which have now become available, including the surviving records from those damaged in the Blitz in 1940. Even those which were burnt and are in very poor condition are being filmed, and are being released as soon as they are completed. A Lottery Bid has been put in to finance this filming, but if it is unsuccessful, some of the records which have not yet been filmed may not become available till about 2043.

There are a number of books which give good advice about using the PRO, such as *New to Kew*, available from the PRO bookshop, which also stocks other useful books for family historians. Readers guides are issued every year, and an updated version of *Tracing your ancestors in the Public Record Office* will be available later in the year. Leaflets are available near the Reading Rooms on searching specific records. Simon also referred to his regular column in *Family Tree Magazine* which gives information on what is happening at the PRO. Far from dry Government records, the Public Record Office covers all aspects of human life.

YM

HELP!

This service is free to members of WMFHS (please quote your membership number when writing). In order to ensure that your appeal is published correctly and is clear to other readers, please make entries clear and concise, give all personal and place names in BLOCK CAPITALS, and all dates in full. Entries from non-members can be accepted, at a rate of £3.00 for up to ten lines. Payments must be in Sterling only, with cheques made payable to WMFHS.

AUGUST/DAWSON/GARDENER/WEBLING/WHITE

Edward AUGUST and Ellen DAWSON married c. 1840 (where?). Residence: Slough, Bucks. in early 1840s. Their son, Edward AUGUST, lived at 40 Seaton Street, Chelsea in 1881. Charles Henry GARDENER, son of John and ?. Residence: 3 Lorne Gardens, Kensington (age 21) when he married Elizabeth Emma MILLIS in December 1903. James Richard WEBLING, son of George & ?. Residence: 31 Lorne Gardens, Kensington (age 22) when he married Ada Louise MILLIS in November 1903 (may have been related to Peggy WEBLING, the Novelist). Who were George's parents and siblings? Benjamin WHITE, son of Benjamin and ?. Residence: 6 Haskell Street, Kensington (age 20) when he married Nellie Florence MILLIS in November 1897. Also seeking descendants of C.H. GARDENER, J.R. WEBLING and Benjamin WHITE Jr.
Marvin W. Millis, 8707 Brooke Road, Delta, B.C., V4C 4G2 Canada.

BARHOW/KEILLOR/KIELLOR/FOTHERINGHAM

George William BARROW, of Bromley, son of George BARROW, married Bridget Forsyth KEILLOR, also of Bromley, on 16 May 1859 at St Leonards Parish Church in Bromley. She was born in Perth, Scotland, 15 August 1887, daughter of James KIELLOR and Elizabeth FOTHERINGHAM. She arrived in London sometime before the 1851 census, at which time she is found with her uncle and aunt James and Jessie FOTHERINGHAM at 7 New North Street in the parish of St George the Martyr. Nothing more has been found of Bridget Forsyth KEILLOR and George William BARROW. Are there any descendants out there? Has anyone seen them in the later censuses? Is anyone else researching these FOTHERINGHAMS or KIELLORS (of whatever spelling variation)? Will gladly give assistance with these families. Any help gratefully received.

Mrs Adrienne Kiellor-Edwards, Ringstrasse 40, 55278 Dexheim, Germany.

LAWRENCE/SMITH

I am particularly interested in contacting anyone researching the descendants of David William Lawrence, b.1829, Highgate Rise, Herts(?) and Harriet Smith, b. 13 August 1830, Warlingham, Surrey. They were married 13 January 1853 at St John's Waterloo, Lambeth, Surrey (both buried Brompton Cemetery). Their second child was Wilton David John Lawrence-, b. 21 August 1855, Kensington, died 1 July 1928 Fulham. Buried Brompton Cemetery (my maternal grandfather).

Mr D. Cooper, P. O. Box 97, Hudson Heights, QC JOP 1J0, Canada.

SHUBHOOK

Trying to trace SHUBROOK family up to date; are you a descendant? At the turn of the century my SHUBROOKS were in Harlesden, and Chartered Accountants in Gracechurch Street. Absolutely anything however small will be gratefully accepted to help me trace a living relative.

Ian Mayes, 24 Newtown Road, Raunds, Northants. NN9 6LX.

SWIFT

Arthur SWIFT and his wife Eliza Maud SWIFT (nee MILTON) are buried in Cherry Lane Cemetery, Uxbridge. I don't know when Arthur died but Eliza died 28 December 1955. Would any WMFHS member be willing to search Cherry Lane Cemetery and supply me with any details engraved on their headstones. I would be very grateful. *Karen Martyn, The Cottage, Well Street, Tywardreath, Par, Cornwall, PL24 2QH.*

From Valerie Bushell, a New Zealand member, comes the following:

For those of you with access to the Internet and who are on Email, there is a relatively new set of web pages called the "LookupExchange" for each county in England (visit <http://www.geocities.com/Heartland/Plains/8555/eng.html> for a list of counties). The web page for each county lists the names of volunteers,

together with a list of the resources which they are willing to look up for other people (for a good example visit the page for Worcestershire, which has quite a lot of volunteers offering help). I am hosting the web pages for Surrey and Middlesex, and so far there are very few volunteers offering help for either of these counties, so if anyone has any resources pertaining to these counties which they are willing to look up please Email vbushell@ihug.co.nz for further information.

P.J. Heseltine of 3 Earning Street, Godmanchester, Cambs. PE18 8JD asks if, for a research project he is undertaking, it would be possible for any Society members who find a Victorian monumental brass in a church to make a note of the engraver's name which should be at the bottom right-hand corner of the plate, plus if possible a brief description of the brass with any inscription and date of death, and let him have any they come across, for which they will be duly credited.

HELP OFFERED

Society member Wendy Mackney-Mills writes to say that from 2 January 1998 she will be living in the Falkland Islands for several years and can undertake research in the islands for any member who thinks an ancestor may have gone to or stopped off at the Islands. She would require the ancestor's name, approximate dates when in the Falklands and any other appropriate information. Write to her at: *Flat 2, 6 Jersey Road, Port Stanley, The Falkland Islands.*

Brian V. Thomas writes to inform us that for a fee of £15 he can photograph specific World War I graves in Belgium and France and supply information on the cemetery and regiment concerned. He is planning trips for 1998 so any requests should reach him as soon as possible, to: *8 Russell Drive, Wollaton, Nottingham NG8 2BH.*

SOCIETY PUBLICATIONS ON MICROFICHE

Monumental Inscriptions

The following transcriptions of monumental inscriptions for churchyards in the West Middlesex area are available.

	UK/£	Overseas/£
St Nicholas, Shepperton	2.35	3.00
St Mary, Magdalene, Littleton	1.35	1.75
St Mary the Virgin, Bedfont	1.35	1.75
St Mary the Virgin, Harmondsworth	2.35	3.00
All Saints, Isleworth	2.35	3.00
All Saints, Laleham	2.35	3.00
All six sets of fiche	9.50	11.00

Surname Indexes to the 1851 Census	UK/£	Overseas/£
Paddington (HO 107/1466-1467) <i>Two fiche.</i>	2.35	3.00
Kensington, Brompton, Hammersmith and Fulham (HO 107/1468-1471) <i>Four fiche. These, together with the two for Paddington (above) cover the whole of the Kensington RD.</i>	4.35	5.20
Chelsea (HO 107/1472-1474) <i>Three fiche. Covers the parish of St Luke, Chelsea.</i>	3.35	4.00
Brentford Registration District (HO 107/1698-1699) with Hampton Sub-District (HO 107/1604 (part)) <i>Three fiche. Includes the parishes of Heston, Isleworth, Twickenham, Hampton, Teddington, Acton, Brentford, Ealing, Hanwell, Greenford, Perivale and Chiswick.</i>	2.85	3.50
Uxbridge (HO 107/1697) <i>Two fiche. A complete index to the surnames, Christian names and ages for the Uxbridge RD which covered the parishes of Cowley, Hayes, Harefield, Hillingdon, Ickenham, Northolt, Norwood, Ruislip and Uxbridge.</i>	2.35	3.00
Staines (HO 107/1696) <i>Two fiche. A complete index to the surnames, Christian names and ages for the Staines RD which covered the parishes of Ashford, Cranford, East Bedfont, Feltham, Hanworth, Harlington, Harmondsworth, Laleham, Littleton, Shepperton, Stanwell, Staines and Sunbury.</i>	2.35	3.00

Indexes to the 1891 Census

Hampton (RG 12/616-618) <i>Set of two microfiche. Index of surnames, Christian names and ages for Hampton, Hampton Wick and Teddington, which comprise the Hampton sub-district of the Kingston registration district.</i>	2.35	3.00
---	------	------

All prices above include postage. Please indicate the number of each that you require, and send your order with your name, address and payment, (Sterling only, cheques made out to West Middlesex Family History Society), to:

Mrs M.M. Harris, Westerwood, Gough's Lane, Warfield, Berkshire RG12 2JR

A HISTORY OF THE WILD AND WEEKLY FAMILIES IN HARMONDSWORTH 1600-1950: PART II

William Wild

The first mention of the name Wild in Harmondsworth occurs in a Bishop's Transcript of 17 January 1629/30, the baptism of William, son of William Wilde. In 1641 the Parliamentary Party sent round the Oath of Protestation and the copy signed 27 February at Harmondsworth contains 140 house-holders' names, including three who were away on "lawful occasions". This copy is now in the House of Lords library, and on it can be seen just one Wild - William, possibly the father in the above baptism, twelve years earlier. This William Wild died in 1656 and left a PCC Will. He was a tailor.

On 14 May 1702 there was buried at Harmondsworth William Wild Senior, a weaver from Shepstone (Sipson) who could quite reasonably be the William born in 1629 some 73 years earlier. However, on 21 December 1700 William Wild Junior, a yeoman from Shepstone, buried a young daughter. He could therefore be the son of the weaver, by virtue of the appellation "Junior". This William died in October 1741, and I have a copy of his PCC will. He appears to have had several children registered as being baptized at Harmondsworth, but the register is rather confusing as to his wife's name. He definitely had four children born to wife Ann:

Mary, 15 September 1697, who married Joseph Rayner of Colnbrook in 1730 and had a daughter Polly who was bridesmaid at her uncle's third marriage to Isabella Cruden in 1753;

William, 22 February 1700, who went to farm at Langley (Bucks) where he is buried (1766) along with his son and grandson (both William) in the same grave;

Elizabeth, born 22 August 1706, who married Richard Weatherly 31 May 1738 and died very soon afterwards, as I learn from her father's will. A tripartite agreement had been made between William Wild, Richard Weatherly and his father John, and £200 was left to Richard as a consequence;

James, 10 September 1709, who was not baptized in the Anglican church, as his father was by then a registered dissenter (see previous reference). In the will of his father James was appointed sole executor and received all his lands and all his goods and chattels. I am descended from James (1709-85), who was the first Wild to marry a Weekly, but we will now digress and follow the line of William (1700-66) in Langley

He appears to have been fairly prosperous, which may account for his failure to figure in his father's will. In the Victoria County History of Middlesex he is recorded as giving the Sun Inn and some land to the parish of Harmondsworth

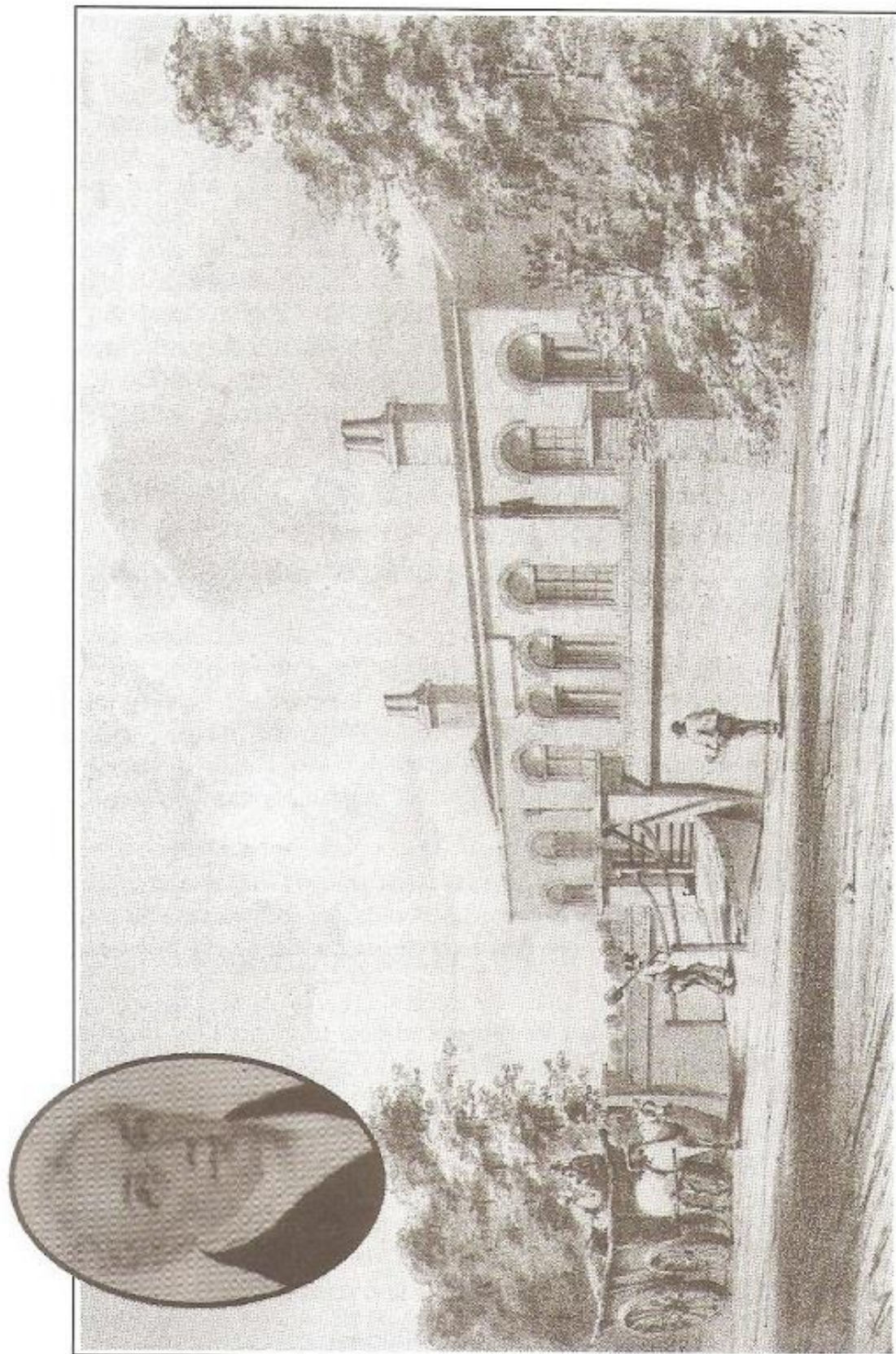
He had two sons - James, 1731-68, and William, 1732-82, by his first wife, and he made a third marriage to Isabella Cruden on 27 August 1753. She was the sister of Alexander Cruden, who produced the first English Concordance to the King James Bible, for which he received £100 and an audience with George III. Both the bride and groom were in middle age; a quadrupartite marriage settlement was drawn up to protect both parties' estates, and we have the original document. In a Cruden Concordance of 1867, which we possess, reference is made to this marriage in a brief account of the life of Alexander Cruden.

William (1732-82) married Ann Blunt on 13 April 1762, but he died in middle age, leaving her a widow with a young son, yet another William (1770-1850). She then left the farm at Langley and moved to Beaconsfield with her son, and we have several legal documents concerning properties and land there. Some of these properties were only disposed of by the Wilds in the 20th Century. The farm which was vacated by Ann was taken over by Thomas (1753-1826), a son of James Wild, and we have the original inventory of the crops, farm implements and livestock, and valuations of all the household effects, which came to £43.7s.5d. Thomas Wild and Hannah Weekly had been married just ten days previously.

William (1770-1850) was apprenticed to an ironmonger in 1785 in Bishopsgate, and in 1796 he started his own business at 29 Wood Street, Cheapside. He was a liveryman of the Ironmongers Company; in 1836 he was Master, and was active in the Company up till his death. He left an extensive will with many bequests, but never married. For agricultural workers over 60 years old he built four almshouses at Langley Marish, and endowed them with £300 per year in 1840. He appointed four trustees and one was his second cousin William Wild (1794-1869), a son of Thomas, who was now farming at Middle Green, Langley. We have a pen and ink drawing of these original almshouses and a copy of a painting of their founder (see illustrations). They are now demolished and sheltered accommodation built in their place. However, a plaque gives the founder's name and those of the original trustees. The William Wild Trust still exists to help finance them and one of the present trustees is the gentleman who lives at what used to be Langley Hall, but is now called Wildcroft.

In 1841 William (1770-1850) presented an inscribed silver tankard to his second cousin William and stated that he, William Wild of London, was the great-nephew of James Wild of Sipson, giving dates of birth, death and where buried. This confirms that James (1709-85) and William (1700-66) were both sons of William (died 1741). This cup has been passed down through the William Wilds, which is why it is now in my possession as the last William to be born in the parish of Harmondsworth.

James Wild of Sipson married Mary Weekly (bom 17 December 1715) at



Print showing the almshouses at Langley Marsh built and endowed by William Wild (see inset picture). The caption on the print is as follows:

ANNO DOMINI 1839
 THESE FOUR ALMS-HOUSES WERE ERECTED AND ENDOWED
 BY WILLIAM WILD, A NATIVE OF LANGLEY,
 for the reception of FOUR AGRICULTURAL LABOURERS of this Parish,
 OF THE AGE OF SIXTY YEARS AND UPWARDS.

Harmondsworth church 2 December 1742, and they had four sons: William, born 23 September 1744; James, 10 October 1746; Richard, 7 February 1749 and Thomas, 15 October 1753. All these dates and those for the next generation, i.e. the children of Thomas, have been recorded by one of the children of Thomas. William (1744-1814) was the Sipson horse doctor and we have one of his bills for treating Mrs Weekly's horses. He also farmed, and his name appears in the Manor Court rolls as a copyholder. He married on 4 October 1776 Ann Birde, both of this parish, at Harmondsworth church and they had two surviving daughters: Mary, who married Richard Weekly on 15 February 1805 and lived at Perry Oaks, and Elizabeth, who married her first cousin Thomas Wild from Langley on 7 June 1808. He was the eldest son of Thomas and Hannah. They started the line of Thomas Wilds who were market gardeners at Sipson for five generations until the middle of the 20th century. This Elizabeth has left an interesting diary which records family, parish and even national events, i.e:

December 1809: She expresses how sorry she feels for her Wild cousins at Langley. "They have the pox caught it before they were enockiated (sic)."

24 July 1804: "Father went to Brentford to vote for Sir Francis Burdett for a parliament."

6 May 1809: "Mr Morgan and Mr Clark came about the commons being took in" (i.e. the Enclosure Act for Harmondsworth). Incidentally, we have a handwritten copy of the Enclosure Award running to over 70 pages in a leather bound book, and also copies of the map that went with it, giving a good idea of all the land in the parish which was farmed by the two families and how held (copy or freehold).

James Wild (1746-80): "was married, and a clerk in a Bank in the city of London, had one hundred pounds a year, had he been spared was to have had two, I have heard Father say. He first hurt himself a riding on horseback and never had his health after".

Richard (1749-96): "unmarried was in the upholstery line, he was baptized and set down with Mr Romaines (a prominent non-conformist minister of his day). He died with an abscess, came down to Hatton (his Weekly cousins' farm) for his health, and there he left this world". He was buried at Harmondsworth 9 May 1796.

Thomas (1753-1826) we have already met on several occasions. He and Hannah had eight children, three boys and five girls:

Thomas, born 17 July 1782 who married his first cousin Elizabeth;

Elizabeth, 5 April 1785, married Richard Rayner of Colnbrook on 7 November 1809;

Martha, 9 September 1786, died unmarried 25 January 1834. She was buried 7 February and her brother William and brother-in-law John Weekly, who were her two executors, arranged for a Mr Vosper to watch the churchyard for the next 46 nights at 3/6d per night - total £8 1s 0d. We have the original bill giving each date from 7 February to 24 March. Mr Vosper's job would have been made easier by the fact that all the Wild graves are within sight of the church porch in a group. Incidentally, all the graves mentioned starting with James (1709-85) are perfectly legible and can be found.

James, born 31 January 1788 and buried 9 August 1853 at Richmond, Surrey, married Elizabeth Rayner (sister of the above Richard) 4 August 1808. James was a butcher. I have been in contact with his 3 x great grandson, a Michael Wild, and he has a family tree of that branch of the family.

Joanna, born 14 Mar 1790, married John Weekly 19 December 1815 at Langley and went to live at Longford;

William, born 18 May 1794, died 26 August 1869, married Mary Weekly, sister of the afore-mentioned John Weekly at Langley on 2 November 1820, and he continued the tenancy of Langley Hall after his father retired to live at Colnbrook.;

Mary, born 18 May 1798, unmarried; and

Ann, born 9 February 1802, also unmarried, lived together at Colnbrook and are buried in the same tomb as their brother William, his wife Mary and their eldest sister Martha. Ann also left a sampler.

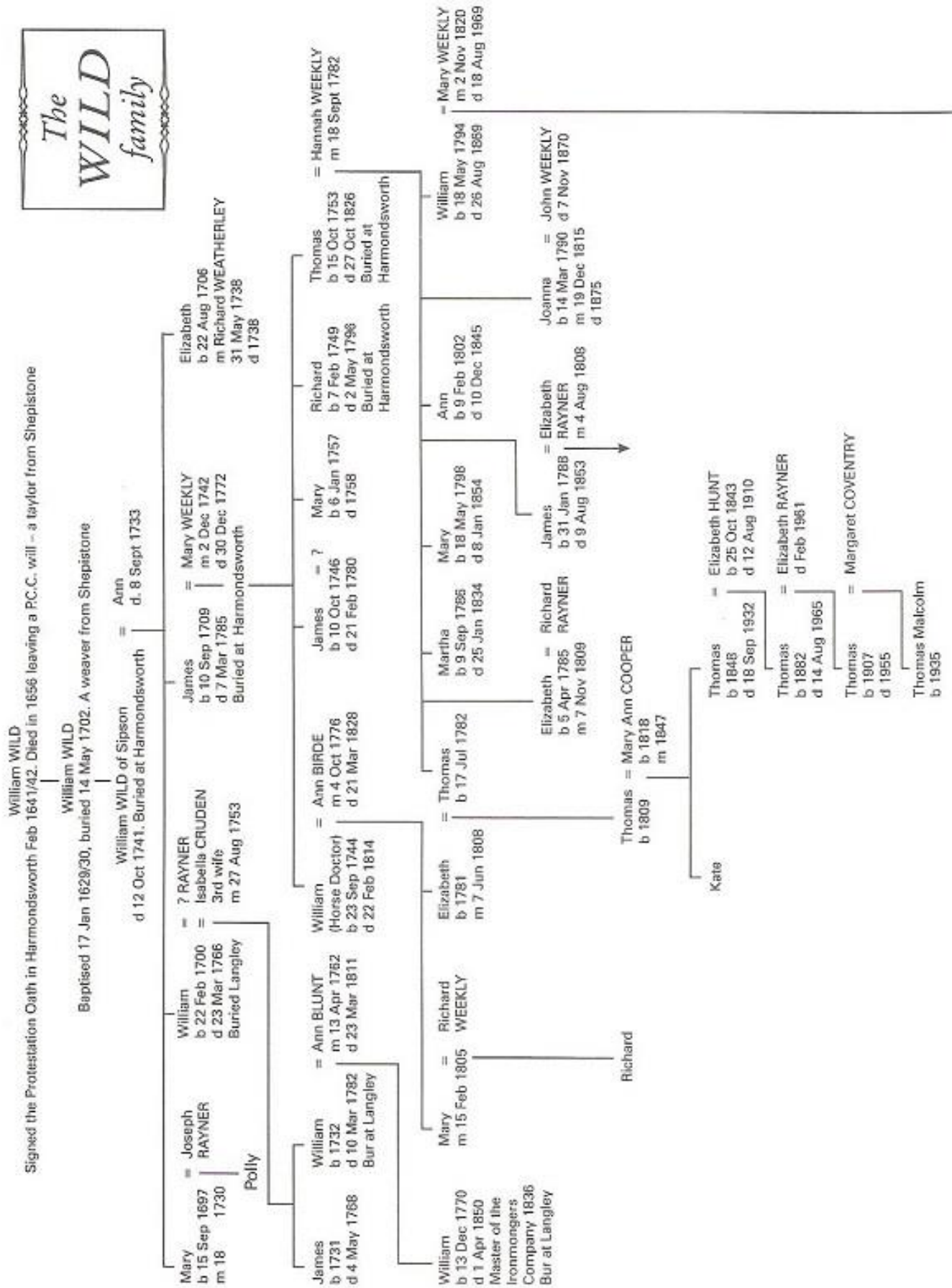
All the births of the children of Thomas and Hannah and William and Mary are recorded at Dr Williams' Library but some discrepancies have occurred, e.g. Joanna is recorded as Jonah!

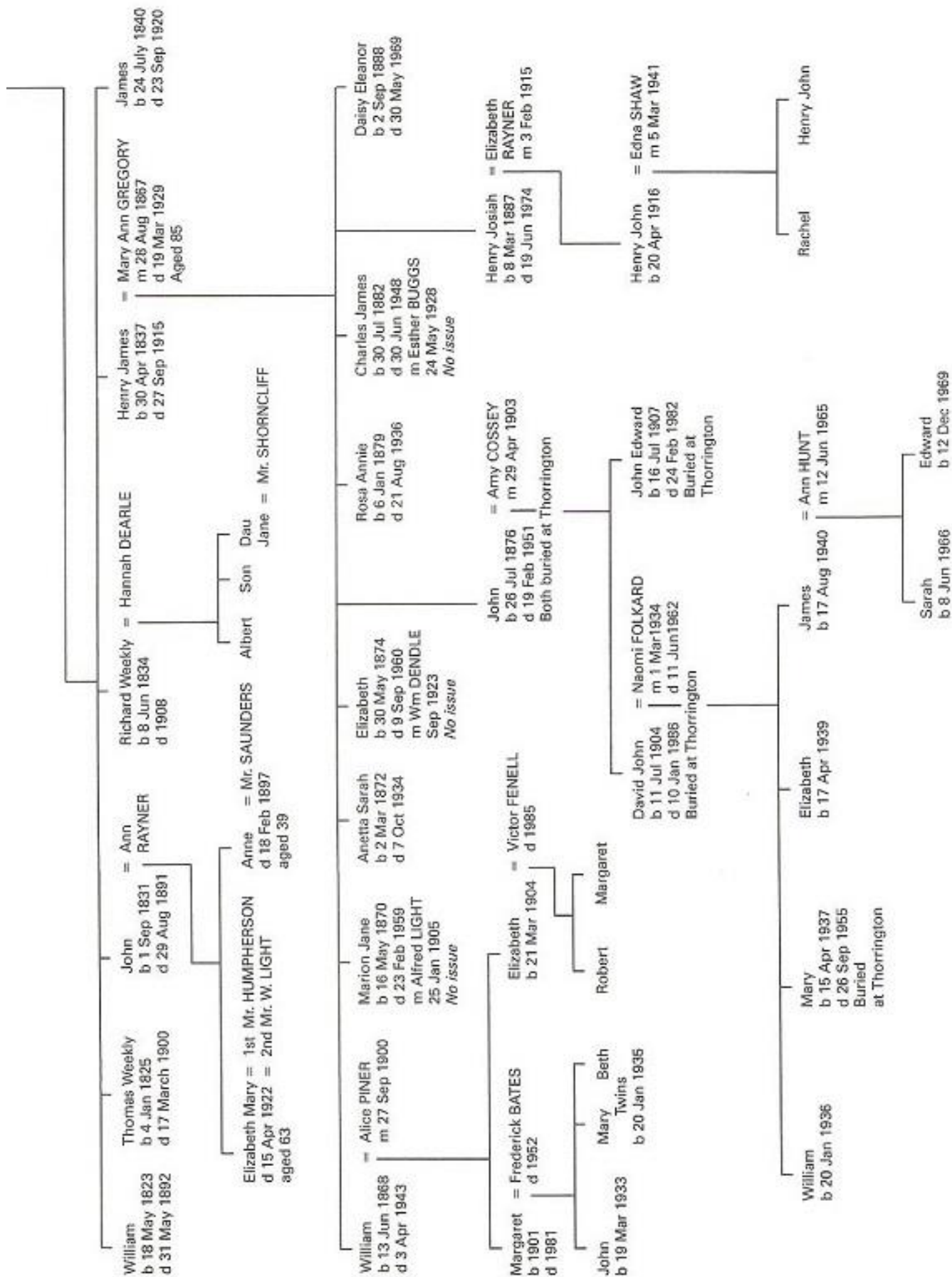
William and Mary had six sons at Langley:

William, born 18 May 1823;
Thomas, born 4 January 1825;
John, born 1 September 1831;
Richard, born 8 June 1884;
Henry James, born 30 April 1837;
James, born 24 July 1840

William, Thomas and James remained unmarried and farmed at Langley Hall till 1870, when they were given notice to quit on Lady Day of that year. We have the original quit notice dated 27 September 1869. However, they were still at Langley for the 1871 census, and we have the farm sale catalogue for 7 August 1872. They then moved to live at Colnbrook with a housekeeper, and after his

The
WILD
family





brothers' deaths James moved to The Orchards, Longford, the house where his aunt and uncle John and Joanna Weekly had lived. William died in 1892, Thomas in 1900 and James 23 September 1920. John went to live with Joanna and John Weekly, married and left two daughters, and was buried in 1891 in the same grave as John and Joanna. Richard was also "adopted" - by Jane and Richard Weekly, unmarried brother and sister. He married and had three children but no grandchildren; he died in 1908 and is buried in the same grave as Jane and Richard.

Henry James married Mary Ann Gregory from Colham Green, Hillingdon, on 28 August 1867. She was the daughter of Josiah Gregory who married Elizabeth Shepherd at All Souls Church in the parish of St Marylebone, Middlesex on 13 May 1837, and we have the original marriage certificate. We also have the indenture of Apprenticeship of her brother Joseph, son of John Shepherd, farmer of Hillingdon, and aged about 15 years when he was bound to Richard Rapkin on 11 May 1824 for six years to learn the trade of tailoring.

Henry James had inherited The Farm, Longford, from Richard Weekly on which he grew market garden crops and sold them in Covent Garden. He had nine children:

William, born 13 June 1868, died 3 April 1943, married Alice Piner 27 September 1900 at Harmondsworth church and had two daughters: Margaret, born 1901, died 1981, and Betty, born 1904 and still living;

Marion Jane, born 16 May 1870, died 23 February 1959, married Alfred Light 25 January 1905 at Harmondsworth church and had no children;

Annetta Sarah, born 2 March 1872, died 7 October 1934, unmarried;

Elizabeth, born 30 May 1874, died 9 September 1960, buried at Ilfracombe, married William Dendle (widower) September 1923 at Ilfracombe, left no children;

John Gregory, born 26 July 1876, died 19 February 1951 and buried at Thorrington, Essex, married Amy Cossey 29 April 1903 at Hayes Baptist Chapel and had two sons;

Rosa Annie, born 6 January 1879, died 21 August 1936, unmarried;

Charles James, born 30 July 1882, died 30 June 1948, married Esther Buggs at Matfield Baptist chapel, Kent, 24 May 1928 and had no children;

Henry Josiah, born 8 March 1887, died 19 June 1974 at Arkona, Canada, married Elizabeth Rayner 3 February 1915 at Colnbrook Baptist Chapel, Bucks and had one son: Henry John, born 1916 and still living with a son Henry John and a daughter Rachel;

Daisy Eleanor, born 2 September 1888, died 30 May 1969 unmarried.

All the four sons of Henry James went into his market garden business, which became H.J. Wild and Sons. When he died on 27 September 1915 he had requested to be buried in the grave of his great grandfather, James (died 1785). We have his pocket book, in which is recorded all his family history back to William who died in 1741 and the founding of Colnbrook Baptist Chapel in 1708. This information must have been the source for the lengthy obituary in the local newspaper which has been preserved in one of the several scrapbooks kept by my father for newspaper cuttings.

John Gregory, my grandfather, had two sons:

David, born 11 July 1904 and John, born 16 July 1907.

In 1928 he came out of the family business and as his share took some twenty acres of land at Heathrow. This was land that had been in the Wild family for at least 120 years, as it was held as either copyhold or freehold by Thomas and William at the time of the Enclosure Award in 1805. The two sons with their father set up another business - D.J. and J.E. Wild, market gardening and glasshouse crops, which still trades today.

On 1 March 1934 David married Naomi Folkard at Eld Lane Baptist, Colchester, Essex, and had four children:

William, born 20 January 1936;
Mary, 15 April 1937, died 26 September 1955;
Elizabeth, born 17 April 1939;
James, 17 August 1940

John, born 1907, died unmarried 24 February 1982 and buried at Thorrington.

In fact there are now six members of the Wild family buried at Thorrington since the family came to Essex:

John Gregory, died 19 February 1951,
Amy, died 10 January 1953,
Mary, died 26 September 1955,
Naomi, died 11 June 1962,
John, died 24 February 1982,
David, died 10 January 1986.

In the Spring of 1944, the blow fell that finally removed all the Wilds from Harmondsworth - the decision to build a new London Airport at Heathrow. We left at six weeks notice in midsummer and moved to Essex; other members of the family farming in the Parish hung on longer, but gradually their land at Longford and Sipson has been taken from them. The largest of these market gardeners was Wild and Robbins (the Thomas Wilds) who at one time employed over 100 full-time employees. Their land now lies sandwiched between the M4

and the approach road to the airport, and is cut into four pieces.

Today there is no-one left in the Parish of Harmondsworth of the two families of WILD and WEEKLY after nearly 400 years of unbroken occupation, and only their memorials remain, in the church of St Mary and in the churchyard, the Weeklys inside as befits their greater wealth, and the poorer relations, the Wilds, in the churchyard.

Acknowledgements

The History of the Manor and Parish of Iver (Bucks), WH. Ward and KS. Block (1933)

The Eccentric Life of Alexander Cruden, Edith Olivier (1934)

The Villages of Harmondsworth, D.J. Wild, edited by Philip Sherwood and published by the WMFHS 1993

BOOKSHELF

The Family Tree Detective - Tracing your Ancestors in England and Wales,
Colin D. Rogers

This is the sort of book in which just reading the introduction makes one want to fling on one's coat and go racing off to an archive depository to do some research. In other words, it is both informative and inspirational. Now in its Third Edition, this reference book, covering the most basic needs-to-know of any family historian, either just starting out or more experienced, has been regularly updated since 1983.

Split into three sections, birth, marriage and death, each section covers firstly the most obvious sources, then failing these, alternative ways of finding those entries which should be there, but aren't, and possibly why they aren't. In fact, this problem-solving aspect of the book would probably be of especial use to those who have been researching for a while and have become "stuck". It covers pitfalls and the sort of errors even experienced researchers can make, and makes suggestions about organising oneself before, during and after a visit to an archive.

Although written in a chatty and humorous style, the book however gives copious references to other books on genealogy where relevant throughout the text, and there is a very full bibliography, which includes a country-by-country list of books on doing genealogy overseas. One of the several appendices includes a full list of Registrars' offices for England and Wales, and there is a useful index.

Manchester University Press, Oxford Road, Manchester M13 9NR. ISBN 0 7190 5213 0. £10.99.

Colchester 1835-1990, Shirley Duggan

One of the most authoritative sources for local history are the Victoria County Histories. Until now, these have only been available in substantial and expensive tomes, and therefore only really accessible at libraries. However, a book has been produced using all the facts in the VCH covering just one period, the past 150 years, in the history of "Britain's oldest town". It includes population and expansion of the town boundaries, local business and manufacturing, local politics, the garrison, churches, recreation, even an earthquake. Also included are hitherto unused photographs and line drawings.

Ian Henry Publications Ltd, 20 Park Drive, Romford, Essex RMI 4LH, £9.95 (£10.65 inc. postage).

A History of Harlow, J.L. Fisher & others

The same company has also produced a book on Harlow which, although known for its "New Town", dates back to Roman times. This book, drawn from two volumes of the VCH of Essex, traces Harlow's development from a second century AD Roman Temple and associated buildings through the days of the ancient parish, to the modern town. Included are over 20 photographs of Harlow, most of which did not appear in the original VCH volume.

Ian Henry Publications Ltd. £6.95 (£7.55 inc. postage).

Two new **Readers' Guides** have recently been published by the PRO Kew: **New to Kew?** by Jane Cox provides helpful advice on finding your way around the PRO at Kew and using the finding aids to the most popular genealogical sources. £5.99. **Education and the State** by Ann Morton guides researchers through the records of the various education departments at all levels of education. £12.99.

Revised editions are now available of **Making Use of the Census** by Susan Lumas, which now includes information on the Family Records Centre. £5.99; and the reissued **Guide to Militia Records** by William Spencer has been renamed **Militia and Volunteer Forces**, £7.99.

All the above PRO publications are available at the PRO Kew or Family Records Centre bookshops or by post from the PRO Sales and Marketing Department; add 20% for postage and packing.

NEWSFLASH

The cost of certificates purchased direct from the Family Records Centre is going up from £6.00 to £6.50 on 1st April 1998.

This will affect the pricing of our certificate courier service, see page 12 for details of new charges.

THE VALUE OF A POST OFFICE SAVINGS BANK BOOK

Joan Scrivener

I have among my family history papers my grandfather, Thomas Everard Scrivener's Post Office Savings Bank book and on studying it again recently I found it of great interest. Not only did it give his name and occupation, but it also bore his signature and address. The account was opened in July 1891 at Sharnbrook, Bedfordshire with a deposit of £6, quite a lot of money in those days. Interestingly his address is given only as Felmersham, his home village.

I knew he had moved from his Bedfordshire village to work in London and I can even get the rough date of this move by looking at the deposits in his savings book. In September 1891 he was still in Bedfordshire, but from December 1891 all the deposits are made in King Street Hammersmith. There are also three Hammersmith addresses noted, 58 Black Lion Lane, 4 St. Peters Grove and 22 Verbena Gardens.

The deposits continue regularly at Hammersmith until 1903, when he makes two large withdrawals. On checking my family tree, I see that this was when he got married. The saving goes on again until January 1904 when there is another withdrawal - at the time of the birth of my father. The deposits are not so frequent now and in June 1905 the post office address changes to Hanwell High Street when they moved to Hanwell. Another couple of withdrawals early in 1907 indicate the birth of his second child. Then throughout 1908 there are six withdrawals. As my grandmother died in 1908 I imagine these may have been to cover doctor's fees and other expenses connected with illness leading up to her death. The book only goes up to January 1909 when there is another demand - about the time of the death of the second child. The book has been stamped "Balance transferred to new book", but unfortunately, I haven't got that one.

My mother always said of this little book "it is the story of a life".

MARRIAGE INDEX

Isleworth 1776-1837 is now included in this index, thanks to hours of time put in by Mavis Sibley. Help is still needed to transcribe

Cranford St Dunstons 1835-1837
Gentleman's Magazine 1768-1837
Hampton Wick 1836-1837

Would anyone be interested in helping with the above?

Please contact *Janet Huckle at 19 Rectory Green, Halesworth, Suffolk IP19 8AN* or Wendy Mott at Society monthly meetings. (See also p.40 of this issue.)

NETWORK TAPE LIBRARY

Last year we recorded six talks, listed below:

The Days of Horse Traffic Robert Barltrop
Fire Insurance Records David Hawkins
Seeing It Through Their Eyes Michael Gandy
The Poor Law and the Parish Peter Park
Chelsea John Neal
Irish Records Bill Davis

If you missed any of the talks or are an out-of-town member, you can hire any tape at £1.60 including p&p for 14 days. Please make all cheques payable to *West Middlesex FHS*. Give your name, address and telephone number and your FHS and Membership number (UK members only).

Send your requests to: *West Middlesex FHS Tape Library, 18A Gordon Road, Ashford, Middlesex TW15 3EU.*

We also have the video "*Bygone West Middlesex*", a unique collection of film covering Pinner, Harrow, Uxbridge, Hayes and Hounslow. This can be hired at our meetings for £1.00.

A full list of tapes is now available, published by the North West Kent FHS at a cost of 20p + SAE from the above address.

WEST MIDDLESEX WAR MEMORIALS

There is now a substantial body of name-list material for most war memorials recorded in West Middlesex. It consists of public, churches', schools' and firms' memorials, etc for WWI and WWII and earlier wars where they exist, although it is not complete yet. Name enquiries, and any knowledge of war memorials you may know about but we don't will be welcomed. When making an enquiry about an individual, please include any information you may have on the village or town where you might expect to find his name mentioned.

For all enquiries, please send a SAE to *Ted Dunstall, 43 Elers Road, Ealing, London W13 9QB*

POSTAL BOOK SERVICE

Please note the following additions to the list published in the September 1997 issue. Please refer to that item for details of how to obtain these books:

The following are in the "Old Photographs" Series

	Price/£	P&P/£	Total/£
Kensington and Chelsea	£7.99	£1.00	£8.99
Chiswick and Brentford	£9.99	£1.00	£10.99

NEW MEMBERS

The Society welcomes all new members. The list below comprises those from whom surname interest forms had been received at the time this issue of the Journal was prepared. The interests themselves are listed opposite.

- A56 Mr Peter Appleyard, 21 Highbury Road, Keyworth, Notts NG12 5JB
A58 Mrs M.C. Abrahams, 113 Lower Shelton Road, Marston Moreteyne, Bedford MK43 0LW
B187 Mrs Margaret Birchenough, 48 Stanley Street, Heywood, Lancashire OL10 1BH
C152 Mrs J.M. Chinnery, 12 Nelson Court, Worle, Weston Super Mare, Somerset BS22 9QF
C153 Mr Dave Cooper, P.O. Box 97, Hudson Heights, QC JOP 1JO, Canada
H160 Mrs E. & Mr J.P. Hancock, 13 Greenways, Egham, Surrey TW20 9PA
L71 Mr William Lyall, "Tathan", 17 Mayfields, Grays, Essex RM16 2XL
M138 Mrs D.K. Mitchell, 36 Portland Road, Ashford, Middx TW15 3BT
M139 Mr M.W. Millis, 8707 Brooke Road, Delta, B.C V4C 4G2, Canada
N26 Mrs Susan Needham, 5 Ridgewood Ave, Wollaston, Stourbridge, West Midlands DY8 4QH
P7 Mr Ron Phelps, "Lyndley Croft", Bridge Road, Cranleigh, Surrey GU6 7HH
P70 Mrs J. Page, 19 Carlyle Road, Staines, Middx TW18 2PU
R6 Mrs V. Reynolds, 27 Holly Road, Blackfield, Southampton SO45 1WS
R76 Mrs Lyn Rothbury, 263 Crawley Close, Corringham, Essex SS17 7JU
R77 Mr Peter Rogers, 48 Welby Lane, Melton Mowbray, Leics LE13 0TB
S159 Mrs Mary Saunders, 88 Sutherland Ave, Biggin Hill, Kent TN16 3HG
T48 Mr Brian Taylor, 13 Alpha Road, Chobham, Woking, Surrey GU24 8NE
W142 Mr J.R. Weatherley, 35 Bishops Ave, Bishops Stortford, Herts CM23 3EJ

Please note the following changes of address:

- B137 Berkshire FHS, Bracknell Branch, 4 Quintilis, Bracknell, Berkshire RG12 7QQ
C125 Mr F.E. Chasemore, c/o Mrs A. Ward, 73 Belclare St, The Gap, Brisbane, Q4061, Australia
D71 Miss Janet Day, Pyports, Downside Bridge Road, Cobham, Surrey KT11 3EH
S15 Mrs M. Smith, 9 Masterton House, Victoria Drive, South Darenth, Dartford, Kent DA4 9ND
W130 Mrs Sheila Wheatley, 4 Mere Road, Upper Bruntingthorpe, Lutterworth, Leics LE17 5QP

SURNAME INTERESTS

The table below gives surname interests for the new members listed opposite. The format should be self-explanatory. Note that the Chapman County Codes are used for entries in the "Counties" column, with the addition of "ALL" indicating that all counties are of interest. Remember to include a SAE with any enquiry if you expect to receive a reply.

Surname	Dates	Place	County	Member
APPLEYARD	ALL	ALL	ANY	A56
BABBINGTON	19C	Louth	LIN	H160
BALLARD	Before 1880	Kensington Area	MDX	L71
BAMBLETT	After 1812	Hanworth	MDX	S159
BERRY	Before 1870	ANY	MDX	L71
BLACKMAN	1830-1850	Ashford	MDX	A58
	1830-1850	Hillingdon	MDX	A58
	1830-1850	Laleham	MDX	A58
BOYER	19-20C	Hook	HAM	H160
BRIGHTWELL	19C	Camberwell	SRY	H160
BROADWAY	19-20C	Westminster	MDX	H160
BROOKE	19-20C	Grimsby	LIN	H160
BROWN	Before 1820	London	MDX	R6
BURKE	After 1800	Hounslow	MDX	R76
BURRELL	1860	ANY	ANY	R76
CAVANAGH	19-20C	Liverpool	LAN	R6
CECIL	ALL	ALL	ANY	A56
CORNEY	1800-1951	Kensington, Notting Hill	MDX	M138
COTTAM	19-20C	Grimsby	LIN	H160
COX	1750-1850	Shrivenham	BRK	P92
	1830-1900	Uxbridge Area	MDX	P92
CRANSTON(E)	18-19C	Brentford	MDX	R77
	19C	Hammersmith	MDX	R77
CURRAN	c.1812	Liverpool	LAN	N26
DAY	1700-1850	Crandle	HAM	T48
	1700-1850	Millbrook	HAM	T48
	1800-1900	Hayes	MDX	T48
DICKMAN	ALL	ALL	ANY	A56
DODGE	18-19C	Hammersmith	MDX	R77
DOUGLAS	18-19C	Brentford	MDX	P7
EARL(E)	18-19C	Sunbury	MDX	R6
	19-20C	Chertsey Area	SRY	R6
	19-20C	Kensington	MDX	R6

Surname	Dates	Place	County	Member
EATON	1800-1850	Woolpit	NFK	P92
EDBROOKE	19C	ANY	SOM	L71
EDMEADS	After 1812	Feltham	MDX	S159
EDWARDS	1790-1852	Hanworth, Covent Garden	MDX	N26
	1855-1880	Kames, Scotland	ARL	N26
EVERETT	1750-1900	Belchamp Otten	ESS	P92
FERMOR	19C	Brentford	MDX	P7
FISHER	19C	ANY	SOM	L71
FLEMING	1900-1945	Chiswick and Fulham	MDX	C153
FOALSTER	16-19C	Marylebone Area	LND	C152
FOGG	After 1800	Hounslow	MDX	R76
FREEMAN	19C	Pall Mall Area	LND	P7
GAMBLIN	19C	ANY	SOM	L71
GOLDING	1750-1900	Cavendish	SFK	P92
GREATOREX	1800-Present	Kensington	MDX	A58
GREEN	1800-Present	Kensington	MDX	A58
	1950-1960	Stanwell	MDX	A58
GRIFFITHS	19-20C	Carew	PEM	H160
HALL	1750-1900	Kensington (formerly Liverpool)	MDX	M138
HANCOCK	19-20C	Chertsey	SRY	H160
HARTLEY	After 1865	Cowley Area	MDX	P92
HAYS	1830-1891	Hillingdon-Hammer- smith-Kensington	MDX	M138
HEATH	16-19C	Old Brentford	MDX	C152
HIBBERT	19C	Kensington Area	MDX	L71
HIGGS	1880s-1940	Shepherds Bush	MDX	C153
HOCKNEY	19-20C	Grimsby	LIN	H160
HOLLAM(N)BY	1840-1900	Brighton	SSX	P92
HORWOOD	1800-1920	Kensington, Notting Hill Area	MDX	M138
HOWES	Before 1870	ANY	MDX	L71
HOWSON	1820-1852	Heston, Hounslow	MDX	N26
JAMES	Before 1880	Westminster Area	MDX	B187
	Before 1900	ALL	HEF	A56
JOHNSON	17-19C	Ealing	LND	C152
JOHNSTONE	17-19C	Marylebone Area	LND	C152
LANGTON	1800-1920	Kensington, Notting Hill Area	MDX	M138
LAWRENCE	1830-Present	Kensington and Fulham	MDX	C153
	19-20C	Hartley Wespall	HAM	H160

Surname	Dates	Place	County	Member
LYALL	19C	Kensington Area	MDX	L71
MANNING	1890-1910	Kensington, Notting Hill Area	MDX	M138
MASTERSON	19-20C	Liverpool	LAN	R6
	Before 1840	Ireland		R6
MCCOY	Before 1850	ALL	MDX	W142
	Before 1850	ALL	SRY	W142
MECOY	Before 1850	ALL	MDX	W142
	Before 1850	ALL	SRY	W142
MILLAS	ALL	ALL	ALL	M139
MILLESS	ALL	ALL	ALL	M139
MILLICE	ALL	ALL	ALL	M139
MILLIES	ALL	ALL	ALL	M139
MILLIS(S)	ALL	ALL	ALL	M139
MILLOS	ALL	ALL	ALL	M139
MILLUS	ALL	ALL	ALL	M139
MILLYS	ALL	ALL	ALL	M139
MORGAN	19C	Pontypridd Area	GLA	L71
MOSSMAN	After 1815	Liverpool	LAN	R6
	Before 1815	Scotland		R6
MYLLIS	ALL	ALL	ALL	M139
MYLLYS	ALL	ALL	ALL	M139
NEEDHAM	1663-1712	Linby, Bulwell	NTT	N26
NETHERCOTT	1850-1900	London Area		R77
NETHERWAY	19-20C	Marylebone	MDX	R6
	Before 1840	Bristol	GLS	R6
PAGE	1750-1800	Billingshurst	SSX	P92
	1750-1800	Leigh	SRY	P92
PARISH	1800-1900	Fulham	MDX	C153
PATRICK	Before 1930	ALL	NTH	A56
	Before 1930	Hounslow	MDX	A56
PEARCE	1830-1900	Hammersmith	MDX	R77
PEARTON	1800-1900	Hayes	MDX	P92
	1830-1900	Hillingdon	MDX	P92
PEPPER	19-20C	Cookham	BKM	H160
PHELPS	19C	Isleworth	MDX	P7
	ANY	ALL	DOR	P7
	ANY	ALL	GLS	P7
	ANY	ALL	PEM	P7
	ANY	ALL	SOM	P7
	ANY	ALL	WIL	P7

Surname	Dates	Place	County	Member
PHELPS (cont'd)	ANY	Brentford	MDX	P7
	ANY	Hanworth	MDX	P7
	ANY	Putney Area	SRY	P7
	ANY	Southwark Area	SRY	P7
	ANY	Twickenham	MDX	P7
PHILLIPS	19C	Hanworth	MDX	P7
PITHER	19C	ANY	MDX	L71
POWELL	1800-1825	Westminster	LND	P92
	After 1830	Uxbridge Area	MDX	P92
PURDY	1800-1900	Fulham	MDX	C153
QUICK	18C	ALL	LAN	W142
RAWLE	19C	Minehead	SOM	L71
REYNOLDS	18-19C	Rochester Area	KEN	R6
ROBINS	1740-1800	Northampton Area	NTH	N26
ROGERS	ANY	Faversham	KEN	R77
RUSSAN	ALL	ALL	ANY	A56
	ALL	ALL	ANY	A56
SADD	1750-1900	Wivenhoe	ESS	P92
SALMON	1816-1880	Salford Area	LAN	N26
SEARES	16-19C	Brentford (ALL)	MDX	C152
STEINLE	After 1845	Kensington Area	MDX	R76
STRANGE	1840-1860	Shrivenham	BRK	P92
STRUTTON	19C	ALL	MDX	L71
TAYLOR	1800-1900	Hackney	MDX	T48
	1800-1900	Hayes	MDX	T48
	Before 1900	ALL	YKS	A56
THURMAN	ANY	Nottingham Area	NTT	R77
TYSON	c.1800	Cartmel	LAN	N26
VINCENT	19-20C	Camberwell	SRY	H160
WARLOW	19-20C	Pimlico	LND	H160
	19-20C	Tenby	PEM	H160
WEATHERLEY	Before 1840	ALL	HRT	W142
	Before 1850	ALL	MDX	W142
WERNHAM	19-20C	Camberwell	SRY	H160
WHITLEY	After 1850	ANY	MDX	L71
WHITLEY	Before 1840	Handborough Area	OXF	L71
WILCOCK	Before 1930	ALL	MDX	A56
	Before 1830	ALL	SRY	A56
WILKINSON	c.1800	Ulverston Area	LAN	N26
WINTERFLOOD	ALL	ANY	ANY	L71
WOODCOCK	Before 1900	ALL	YKS	A56
WYKE	18C	ALL	LAN	W142



Hillingdon Family History Society

Member of the Federation of Family History Societies

FAMILY HISTORY AT THE 1998 MIDDLESEX COUNTY SHOW

HILLINGDON FAMILY HISTORY SOCIETY are hosting a Family and Local History Fair at this popular event, which takes place over two days

SATURDAY/SUNDAY, 27/28 JUNE 1998

Family history societies from Middlesex and surrounding areas will be represented, together with local history societies and traders. **Advice Table.** There will also be a display of entries from the **Children's History Competition** organised by **Ruislip-Northwood Rotary Club**

The County show usually attracts some 40,000 visitors over the two days and offers attractions suitable for all members of the family.

The showground is on Park Road, Uxbridge, which is easily accessible by road via the A40 Uxbridge or by London transport to Uxbridge Station where there is a free bus to the showground.

ADMISSION CHARGES

Adults	£5.00 (Saturday)	£6.00 (Sunday)
Concessions	£2.50 (Saturday)	£3.00 (Sunday)
Car Parking	£2.00 on either day	

TICKETS BOUGHT IN ADVANCE

Adults £4.00, Concessions £2.00, Car Parking £1.50

FURTHER INFORMATION FROM:

01753-885602 (Gill May), 01895-236419 (Tom Morgan)
or 0181-866 1367 (Anne Sullivan)

INDEXES HELD BY MEMBERS

These indexes are intended as aids to research in the West Middlesex area. For members of the Society fees are as stated (please quote membership number); for non-members they are twice what is indicated below, except where specified. Please note that all enquirers must include a SAE (or IRC). Unless stated otherwise, cheques should be made payable to the holder of the index, **not** the WMFHS.

West Middlesex Marriage Index contains only marriages taking place before civil registration (1837): about 65,500 entries, mainly from West Middlesex. Rates as follows:

A List indicating coverage - SAE plus a second class stamp.

A search for one specific marriage – SAE plus 50p (non-members £1)

Up to 20 entries of one surname – SAE plus £1 (non-members £2)

Cheques should be made payable to WMFHS, in Sterling only. Name variants required need to be listed by the enquirer. Give name(s), approximate date and parish or area if known. Include your membership number.

Mrs J.M. Huckle, 19 Rectory Green, Halesworth, Suffolk IP19 8AN

West Middlesex Strays People from or born in our area found in another area.

Enquiries £1.00.

Mrs Wendy Mott, 24 Addison Avenue, Hounslow TW3 4AP

Monumental Inscriptions: Acton, Ashford, Cranford, Chiswick, Ealing, Feltham, Fulham (recorded 100 years ago), Hampton, Harlington, Hayes, Heston, Hillingdon, Hounslow (United Reformed), Norwood Green, Perivale, Staines, Teddington, Twickenham and Uxbridge. Enquiries: free for members, £1.00 for non-members.

Mrs Wendy Mott, 24 Addison Avenue, Hounslow TW3 4AP

1881 Census Indexes For fee of £1.00 plus SAE (at least 9”x4”) any one county searched for any one surname. Fee will cover the supply of up to four photocopies of the entries found. Cheques payable to Mrs Margaret Harnden.

Mrs Jill Munson, 41 Trotsworth Avenue, Virginia Water, Surrey GU25 4AN

Chiswick Census 1801 Head of household plus numbers of males and females; additional information in some cases.

Mrs R. Ward, 29 Ernest Gardens, Chiswick, London W4

West Middlesex Settlement Records New Brentford, Uxbridge, Staines, Ealing, Feltham, Friern Barnet, Fulham, Hammersmith, Hanwell, Chelsea. Enquiries £1.00.

Miss J. Zouch, 132 Larch Crescent, Yeading, Yaves, Middlesex

Divorce Index An index to divorces reported in *The Times* 1785-1910. Indexed by surname of principal parties, surname of co-respondent(s), and alias(es). Enquiries members free (SAE or IRC and please quote membership no); non-members: £1.50 (UK), A\$4, NZ\$5, inc. postage. Also available on fiche at £8.00 (UK), A\$22, NZ\$26, inc. airmail postage worldwide.

Mrs. Annie Weare, PO Box 3021, Bassendean 6054, Western Australia.

New Brentford St Lawrence Registers Baptisms, marriages and burials 1617-1720/21. Enquiries £1.00

Miss J. Zouch, 132 Larch Crescent, Yeading, Hayes, Middlesex.

Hayes St Mary's Parish Registers Baptisms, marriages, burials 1557-1840. Enquiries £1 per surname.

Hillingdon Parish Registers Baptisms 1559-1909, marriages 1559-1910, burials 1559-1948 (churchyard) and 1867-1903 (cemetery). Enquiries £1.

Isleworth All Saints Parish Registers Baptisms 1566-1919, marriages 1566-1927, burials 1566-1942. Enquiries £1.00, or \$5 US/Canada.

Mrs M. Sibley, 13 Blossom Way, West Drayton, Middlesex UB7 9HF

Isleworth All Saints Parish Registers Baptisms 1808-1854, marriages 1754-1895, burials 1813-1879. Poor Law Examinations 1777-1801, 1813-1830. Enquiries £1.00, or \$5 US/Canada.

Mr A. Powell, 71 Whiteside Road, Brentford, Middlesex

Harlington Parish Registers Baptisms, marriages, burials 1540-1850. Enquiries £1.00. *Mr P. Sherwood, 5 Victoria Lane, Harlington, Middlesex UB3 SEW*

Chiswick Marriages Around 800 marriages October 1678- December 1800. Enquiries, giving approximate date, £100.

Mr A. Powell, 71 Whiteside Road, Brentford, Middlesex

Harmondsworth Parish Registers Baptisms, marriages and burials 1670-1837. Enquiries £1.00, or 3 IRCs per name.

Mrs Wendy Mott, 24 Addison Avenue, Hounslow TW3 4AP

Feltham Index An expanding collection of transcripts and indexes relating to the parish of Feltham, Enquiries free, on receipt of a SAE. Contributions welcome.

Mr P. Watson, 22 Bedfont Road, Feltham, Middlesex TW13 4LT

Teddington Index A growing database of material relating to Teddington and its inhabitants. Enquiries free to WMFHS members, on receipt of a SAE. Additional sources welcome.

Mr D. Neller, 8 Elleray Road, Teddington, Middlesex TW11 0HG

Coastguard Index All enquiries £5.00 per name.

Mrs E. Stage, 150 Fulwell Park Avenue, Twickenham, Middlesex

West Middlesex Family History Society

Area of Interest

Acton, Ashford, East Bedfont, Chelsea, Chiswick, Cowley, Cranford, West Drayton, Ealing with Old Brentford, Feltham, Fulham, Hampton, Hanwell with New Brentford, Hanworth, Harlington, Harmondsworth, Hayes with Norwood, Hammersmith, Heston, Hillingdon, Hounslow, Isleworth, Kensington, Laleham, Littleton, Shepperton, Staines, Stanwell, Sunbury, Teddington, Twickenham and Uxbridge.

If undelivered, return to: West Middlesex FHS, c/o P. Roe, 171 Fernside Avenue,
Feltham, Middlesex TW13 7BQ